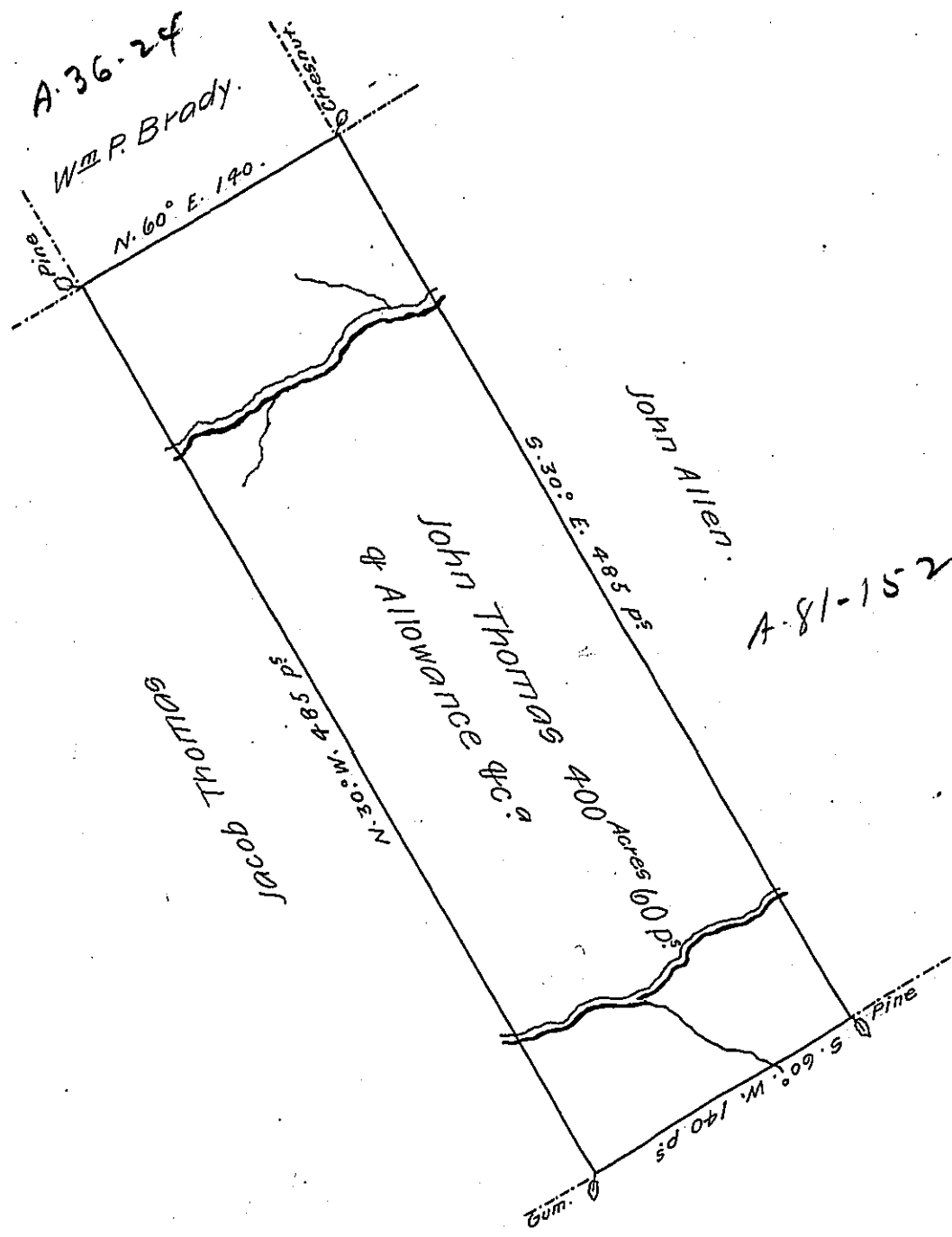


FORM No. 1.



*Draught of a Tract of Land situate in Haines or Potters Township
 Mifflin or Northumberland County containing four hundred Acres
 and sixty Perches, and the usual Allowance of six P. Cent for
 Roads &c. adjoining Land of John Allen and others, surveyed
 the 20th June 1794 for John Thomas in Pursuance of his Warrant
 Dated at Philadelphia the 24th March 1794.*

PE

*To Daniel Brodhead Esq^r
 Surveyor General of Pennsylv^a*

Frd. Evans D. S.

*IN TESTIMONY that the above is a copy of the original remaining on file in
 the Department of Internal Affairs of Pennsylvania, made
 conformably to an Act of Assembly approved the 16th day of
 February 1833, I have hereunto set my hand and caused
 the Seal of said Department to be affixed at Harrisburg,
 this twenty second day of March 1907.*

Isaac D. Brown
 Secretary of Internal Affairs.